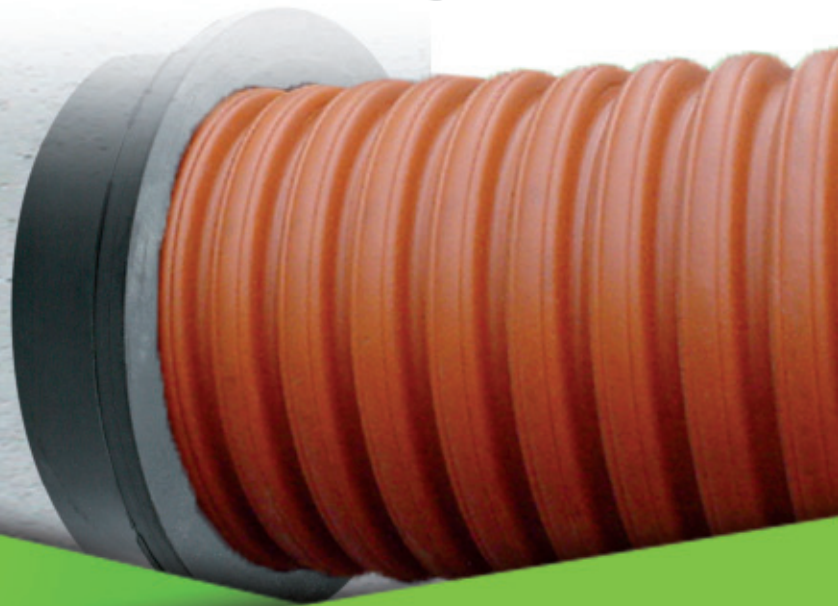


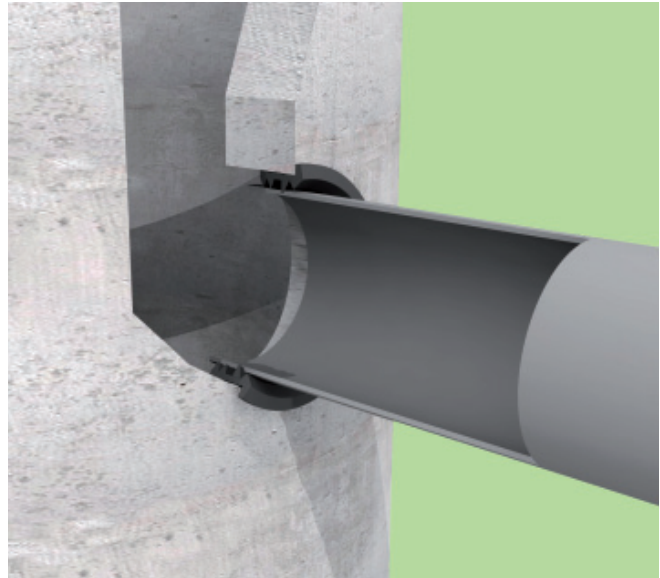


Pipeline Accessories

Manhole Connector
4 pipes



Manhole Connector 4 pipes - Type P-MC



Product information

The sealing rings for the connection of plastic pipelines to manholes are made for a safe seal inside the annular space between core drilled hole and carrier pipe.

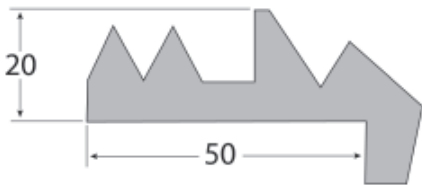
Manhole Connectors 4 pipes are made from high quality EPDM elastomer durometer 50 Shore A, acc. to EN681, to guarantee a long life-time.

Please see the available combinations of manhole and pipe diameters.

Installation instruction

1. Drilling - Drill the concrete or plastic wall with the core drill in specified dimension. Deburr the hole edges.
2. Mark the insertion depth of the seal on the pipe for subsequent checking of optimal installation. If possible, use lubricant when inserting the seal and the pipe.

PLAIN Manhole Connector Type P-MC



Other profiles
on request

Pipe OD	Ø Drill hole	Art.No.
110	138 mm	22900
125	151 mm	22901
160	186 mm	22902
200	226 mm	22903
250	276 mm	22904
315	341 mm	22905
400	426 mm	22906
500	526 mm	22907
630	656 mm	22908